

Rating type A1: 184 kW (250 HP) @ 2800 rpm

Rating type A2: - kW (- HP) @ - rpm

Rating type B: 147 kW (200 HP) @ 2800 rpm

Rating type C: 125 kW (170 HP) @ 2800 rpm

Marine Pleasure

SPECIFICATIONS

Thermodynamic cycle	Diesel 4 stroke	
Air handling	TCA	
Cylinders arrangement	4L	
Bore x Stroke	millimeters	102 x 120
Total displacement	liters	3.9
Valves per cylinder	number	4
Cooling System	liquid	
Direction of Rotation (viewed facing flywheel)	CCW	
Engine management	by EDC (Electronic Diesel Control)	
Injection System	ECR	

STANDARD CONFIGURATION

Flywheel housing	type	SAE 3
Flywheel size	inch	11" ½
Air filter	rear side	
Turbocharger	Fixed Geometry (water cooled) Turbo with Aftercooler (TAA)	
Heat exchanger	tube type	
Exhaust gas water mixer - Exhaust cooled elbow	-	
Water charge tank	included	
Fuel filter	number	1
Fuel prefilter	included (loose)	
Fuel pump	included	
Oil filter	number	1
Oil sump	aluminum	
Oil vapours blowby circuit	rear	
Oil heat exchanger	built in the crankcase	
Oil filler	n° 1	
Starter	12V - 3kW	
Alternator	12 V - 90 A	
Engine stop device	by electronic central unit	
Wiring harness	with negative to ground connection	
Painting color	white "ICE"	

WEIGHT AND DIMENSIONS

Dimensions	LxWxH (mm)	850 x 708 x 785
Dry Weight	Kg	490

DIMENSIONS CAN BE CHANGED ACCORDING TO ENGINE OPTIONS



MARINE

IMAGES SHOWN ARE FOR ILLUSTRATION PURPOSE ONLY

ELECTRICAL SYSTEM

Voltage	V	12
---------	---	----

NOT INCLUDED IN STANDARD CONFIGURATION

Battery - minimum capacity recommended	Ah	120 Ah
Battery - minimum cold cranking capacity recommended	Ah	900 Ah

LEGEND

Arrangement	Air Handling	Turbocharger	Injection System	Exhaust System
L (in line)	TCA (Turbocharged with aftercooler)	WG (Wastegate)	M (Mechanical)	EGR (Exhaust Gas Recirculation)
V (90° "V" configuration)	TC (Turbocharged)	VGT (Variable Geometry Turbocharger)	ECR (Electronic Common Rail)	SCR (Selective Catalytic Reduction)
	NA (Naturally Aspirated)	TST (Twin Stage Turbocharger)	EUI (Electronic Unit Injector)	
			MPI (Multi Point Injection)	

- A1 High Performance Crafts.** Full throttle operation restricted within 10% of total use period. Cruising speed at engine rpm <90% of rated speed setting - Maximum usage 300 hours per year.
- A2 Pleasure Commercial Vessels.** Full throttle operation restricted within 10% of total use period. Cruising speed at engine rpm <90% of rated speed setting - Maximum usage 1000 hours per year.
- B light Duty:** Full throttle operation restricted within 10% of use period. Cruising speed at engine rpm <90% of rated speed setting - Maximum usage 1500 hours per year.
- C Medium Duty:** Full throttle operation < 25% of use period. Cruising speed at engine rpm <90% of rated speed setting - Maximum usage 3000 hours per year.
- D Heavy Duty**

FOR INFORMATION ON THE AVAILABLE RATINGS NOT LISTED IN THIS DOCUMENT PLEASE CONTACT THE FPT INDUSTRIAL SALES NETWORK OR VISIT OUR SITE WWW.FPTINDUSTRIAL.COM

SPECIFICATION SUBJECT TO CHANGE WITHOUT NOTICE

LEES GROUP

184 GREAT SOUTH ROAD, TAKANINI, AUCKLAND, NZ
 PO BOX 72-047, PAPAURA 2244
 PH 64-9-2996019 FAX 64-9-2989986
 EMAIL: info@leesgroup.com
www.leesgroup.com



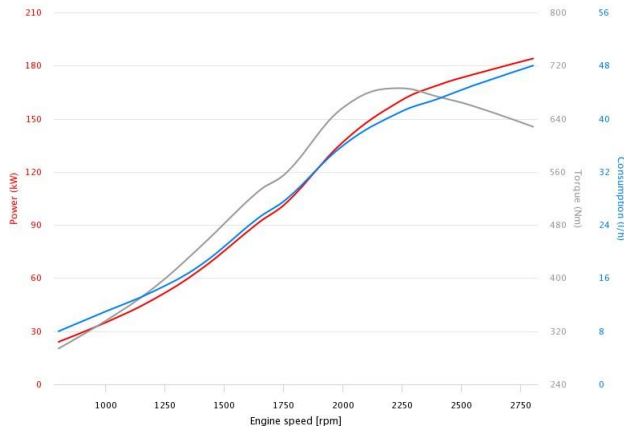
RATING TYPE

		A1	A2	B	C
Maximum power [*]	kW (HP)	184 (250)	- (-)	147 (200)	125 (170)
At speed	rpm	2800	-	2800	2800
Maximum no load governed speed at max rating	rpm	3000	-	3000	3000
Minimum idling speed	rpm	700	-	700	700
Mean piston speed at rated speed	m/s	11.2	-	11.2	3000
BMEP at max power	bar	22.1	-	18.3	15.6
Specific fuel consumption at full load (best value)	g/kWh @ rpm	217.4	-	216.7	216.7
Oil consumption at max rating	g/kWh @ rpm		< 0.1		
Minimum starting temperature without auxiliaries	°C		-10°		
Oil and oil filter maintenance interval for replacement	hours		600		

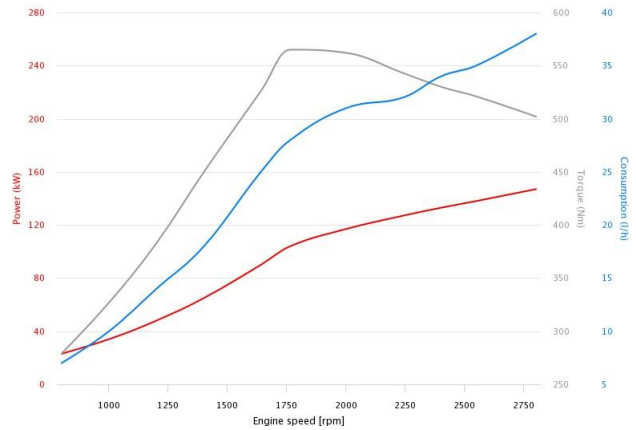
* Net Power at flywheel according to ISO 3046/1, after 50 hours running, Fuel Diesel EN 590. Power tolerance 5%.

POWER & TORQUE

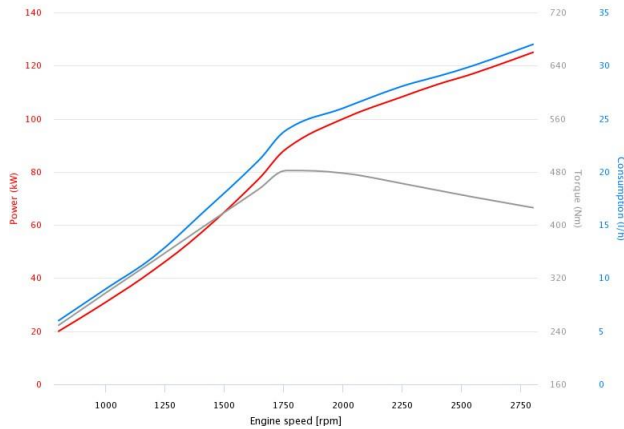
IMO MARPOL Tier2, EU-RCD Stage I, EU-IWV Stage IIIA, EU-CCNR Stage II | N40
250 184 kW – Class A1 184 kW



IMO MARPOL Tier2, EU-RCD Stage I, EU-IWV Stage IIIA, EU-CCNR Stage II | N40
250 184 kW – Class B 147 kW



IMO MARPOL Tier2, EU-RCD Stage I, EU-IWV Stage IIIA, EU-CCNR Stage II | N40
250 184 kW – Class C 125 kW



LEGEND

Arrangement	Air Handling	Turbocharger	Injection System	Exhaust System
L (in line)	TCA (Turbocharged with aftercooler)	WG (Wastegate)	M (Mechanical)	EGR (Exhaust Gas Recirculation)
V (90° "V" configuration)	TC (Turbocharged)	VGT (Variable Geometry Turbocharger)	ECR (Electronic Common Rail)	SCR (Selective Catalytic Reduction)
	NA (Naturally Aspirated)	TST (Twin Stage Turbocharger)	EUI (Electronic Unit Injector)	
			MPI (Multi Point Injection)	

A1 High Performance Crafts. Full throttle operation restricted within 10% of total use period. Cruising speed at engine rpm <90% of rated speed setting - Maximum usage 300 hours per year.
A2 Pleasure Commercial Vessels. Full throttle operation restricted within 10% of total use period. Cruising speed at engine rpm <90% of rated speed setting - Maximum usage 1000 hours per year.

B light Duty: Full throttle operation restricted within 10% of use period. Cruising speed at engine rpm <90% of rated speed setting - Maximum usage 1500 hours per year.

C Medium Duty: Full throttle operation <25% of use period. Cruising speed at engine rpm <90% of rated speed setting - Maximum usage 3000 hours per year.

D Heavy Duty

FOR INFORMATION ON THE AVAILABLE RATINGS NOT LISTED IN THIS DOCUMENT PLEASE CONTACT THE FPT INDUSTRIAL SALES NETWORK OR VISIT OUR SITE WWW.FPTINDUSTRIAL.COM

SPECIFICATION SUBJECT TO CHANGE WITHOUT NOTICE

LEES GROUP

184 GREAT SOUTH ROAD, TAKANINI, AUCKLAND, NZ

PO BOX 72-047, PAPAURA 2244

PH 64-9-2996019 FAX 64-9-2989986

EMAIL: info@leesgroup.com

www.leesgroup.com



MARINE